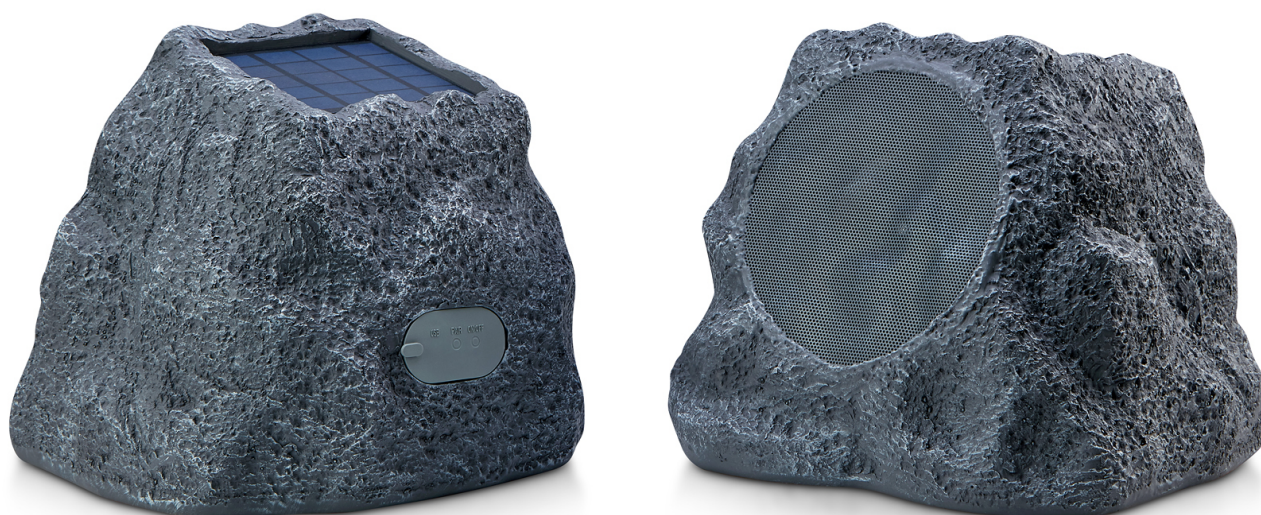




SPS-3000



## Dual Solar Bluetooth® True Wireless Speakers

### Instruction Manual

Please read carefully before use and keep for future reference

<b>In the Box</b>	<b>3</b>
<b>Precautions &amp; Warnings</b>	<b>3</b>
<b>Features</b>	<b>4</b>
<b>Functions</b>	<b>4</b>
<b>Specifications</b>	<b>7</b>
<b>FCC Compliance Statement</b>	<b>7</b>
<b>Legal &amp; Safety</b>	<b>8</b>
<b>Warranty &amp; Support</b>	<b>8</b>

# IN THE BOX

Upon opening your new SoundPRO SPS-3000 speakers, please ensure that you find following contents:

SPS-3000 Solar Rock Speakers x 2  
Y Style Micro USB to USB Charging Cable  
ETL Approved Power Adaptor  
User Manual  
Quick Set up Guide

## PRECAUTIONS

**PLEASE READ THE INSTRUCTIONS  
IN THIS MANUAL AND THOSE MARKED  
ON THE SPEAKERS**

The SoundPRO® Dual Solar Bluetooth Speakers have been designed and manufactured to assure personal safety. Improper use can result in electric shock or fire hazard. The safeguards incorporated in this unit will protect you if you observe the following procedures for installation, use and servicing. This unit is fully transistorized and does not contain any parts that can be repaired by the user.

## WARNINGS



**FIRE AND ELECTRICAL  
SHOCK HAZARD**



1. Do not place any open flame sources, such as lighted candles, on or near the speakers.
2. Do not attempt to service the speakers yourself.
3. Opening or removing covers may expose you to dangerous voltages or other hazards and will void the manufacturer's warranty.
4. To prevent risk of fire or electric shock, avoid overloading wall outlets, extension cords, or integral convenience receptacles.
5. Lightning Storms: Unplug this apparatus during lightning storms.
6. Object and Liquid Entry: Never insert objects of any kind through the openings of the speakers, as it may touch dangerous voltage points or short-circuit parts that could result in a fire or electric shock. Care should be taken so that objects do not fall and liquids are not spilled into the speakers through openings in the enclosure

## BATTERY CHARGING

**IMPORTANT - BATTERIES MUST BE  
CHARGED PRIOR TO FIRST USE**

1. To reduce the risk of fire or electric shock, do not expose the speakers to rain or moisture while charging with the USB cable .
2. The speakers should not be exposed to dripping or splashing; and objects filled with liquids, such as vases, should not be placed on or near it while being charged by USB.
3. Do not continue charging the battery if it does not reach full charge within the specified charging time while using the USB cable. Overcharging may cause the battery to become hot, rupture, or ignite.
4. Do not attempt to charge the battery in temperatures outside the range of 32°-104°F(0°-40°c).
5. If you see any heat deformation or leakage, properly dispose of the battery.
6. If the battery begins to leak, do not allow the liquid to come in contact with your skin or eyes. If contact has been made, wash the affected area with plenty of water and seek medical attention immediately.

# FEATURES

Need to outfit your outdoor deck, garden or patio with high quality wireless sound? Look no further! The SoundPRO® Dual Solar Bluetooth Wireless speakers are the perfect solution. The realistic rock speaker finish let's your speakers blend right in with the natural surroundings of your yard or garden, hide them in plain sight! With a weatherproof rating of IPX5, they are resistant to water splashes from any angle so you can leave outside without worrying about the weather. Specially tuned for outdoor use, these Rock Speakers will project big clear sound perfect for open air environments. Charge both at the same time with included Y style micro-USB cable. Stream music wirelessly from any Bluetooth® enabled device. The included speakers use TWS (True Wireless Stereo) linking, pair together with ease. The SPS-3000 is the perfect solution for your outdoor wireless audio needs and is sure to impress your friends and neighbors.

- Long range Bluetooth V5.0 with TWS True Wireless Sound for extended range connection to and from your mobile device
- Completely wireless operation with easy set up and installation. Users no longer need to be tied down to indoor amplified sound that needs to wire to passive outdoor speakers to control outside music.
- Built in rechargeable Lithium-Ion batteries operates speakers up to 10 hours on a full charge.
- Solar and USB charging options. No wiring required. Solar option charges both on sunny and cloudy days.
- Wirelessly stream music up to 50ft away directly from an iPhone or other compatible Bluetooth device.
- Powerful amplification fills backyards and pool sides with amazing sound.
- IPX5 Waterproof rated speakers offers confidence in knowing when it rains or snows the speakers are protected.
- Weatherproof and UV resistant multi-layer cabinets made of durable material will withstand the elements and last for years to come.
- Available in true to actual rock colorations Canyon Sandstone or Gray Slate finish to naturally blend into a variety of landscape environments

## FUNCTIONS

TWS (True Wireless Stereo) is a Bluetooth technology that enables 2 speakers to pair together wirelessly while providing high quality left and right channel stereo sound.

Bluetooth® is a wireless technology that enables 2 devices to transmit data to accomplish a variety of tasks, such as play music.

### Steps to start up

Speakers must be fully charged prior to first use Plug in two speakers with the included Y Style USB cable. Charge speakers until the LED lights on the back turns off or 100% fully charged.

### Power Button

Press the Power button to power on or off. You will hear “Bluetooth mode”.

### Connect TWS

Power on both speakers. The speakers enter TWS pairing mode and attempt to pair automatically. Once the speakers are successfully paired to each other, you will hear an announcement declaring “Left Channel” and “Right Channel” accordingly. If the speakers do not enter TWS paring automatically, press the Pair button on the back panel of Master speaker.

**Note:** Max distance between speakers: 50ft+. Increasing distance between the two speakers will result in shorter range from your Bluetooth device.

### Connect Bluetooth

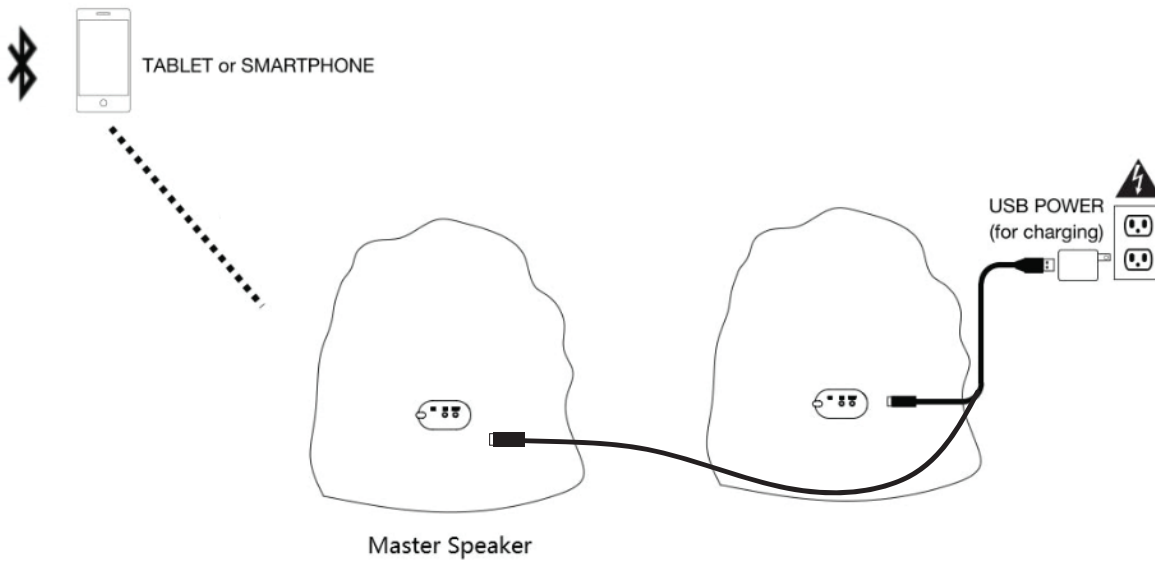
Speakers will enter pairing automatically after being powered on. To connect a device for the first time, go to your device's Bluetooth setup and connect to the device listed as “SOUNDPRO SPS 3000”

The LED on your speaker will be a solid Blue, and you will hear the tone "Bluetooth Connected" when your device successfully pairs to the Master speaker. This step will not be required each time you turn on the speakers. Speakers will remain paired if both speakers have not fallen to 0% battery capacity.

**Note:** This speaker supports Bluetooth 5.0, "enabling 50+ ft. range between audio source and speakers" 50 ft range is not guaranteed but is possible with optimal conditions.

**Disconnect TWS**

Double Press the PAIR button to disconnect paired speakers. You will hear the tone "Disconnected" when you are successful. Now they can be used as independent speakers.



LED COLOR	FUNCTION	STATUS
RED	Charging	Battery Charging
OFF	Charging	Fully Charged
BLUE (Blinking)	Bluetooth	Attempting to pair
BLUE (Solid)	Bluetooth	Pairing successful
BLUE-WHITE (Solid)	TWS	Master Speaker
WHITE (Blinking)	TWS	Attempting to link to Master
WHITE (Solid)	TWS	Linked to Master

**VOICE PROMPTS:**

Bluetooth Mode

Right Channel

Left Channel

Pairing

Bluetooth Connected

Bluetooth Disconnected

Disconnected

About 40 percent battery remain

About 60 percent battery remain

About 80 percent battery remain

100 percent battery remain

Battery Low, please charge it by USB cable

# BACK PANEL

## 1. Power ON/OFF

Short press power on and off.  
Hold the power button for 3 Seconds for battery notification.

## 2. Pair (TWS)

Short press PAIR button for TWS connecting. You will hear “pairing”. Double press PAIR button to disconnect TWS.  
Hold the PAIR button 3 Seconds for to disconnect Bluetooth®. You will hear “Bluetooth disconnected”.

**Note:** will automatically power off after 10 minutes if no audio is playing.

## 3. Micro-USB charging

## 4. Charging LED

RED - Speaker Battery is charging. Off - Speaker Battery fully charged.

## 5. Bluetooth /TWS LED

### 5.1 Bluetooth LED

BLUE BLINKING - Attempting to Bluetooth pair.  
SOLID BLUE- Speaker has successfully paired via Bluetooth.  
SLOW BLUE BLINKING- Speaker is playing via Bluetooth.

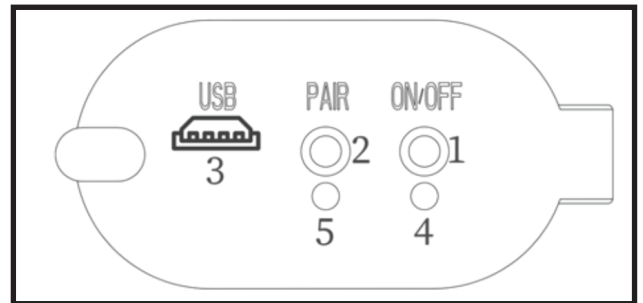
### 5.2 TWS LED

#### *Master speaker*

SOLID BLUE & WHITE – Master Speaker has successfully paired via Bluetooth / TWS.  
SOLID WHITE & SLOW BLUE  
BLINKING - Speaker is playing.

#### *Link Speaker*

SOLID WHITE - Link Speaker has successfully paired via TWS. And speaker is playing.



# SPECIFICATIONS

Solar TWS Rock speaker - Pair	SPS-3000
Output Power:	2 x 5W (Total RMS: 10W)
Power Supply Input:	Solar powered & Micro USB charging/5V
Frequency range:	90-11kHz
Sensitivity:	84±3dB 1.0W/1m
Driver:	4" 4Ω
Bluetooth Distance:	Up to 50 ft/15m**
TWS Range:	Up to 50 ft/15m**
Speaker Waterproof Rating:	IPX5
Playing Time:	Up to 10 hours*
Charging Time:	10 hrs solar or 2 hrs with power adaptor
Battery:	Built in-Li-ion battery capacity 2000mAh
Accessories:	One "Y" style 3.2ft/1m micro-USB charging cable, ETL approved power adaptor, User manual, Quick Set up Guide
Color:	Gray Slate/Sandstone

\*Play time will vary depending on volume level and type of media.

\*\*Distance may vary depending on any objects or interference between speakers.

## FCC RULES

### FCC Compliance Statement

This device complies with Part 15 of the FCC Rules. The operation is subject to the following two conditions:

- (1) This device may not cause harmful interference, and
- (2) This device must accept any interference received, including interference that may cause undesired operation.

### NOTE:

This equipment has been tested and found to comply with the limits for a class B digital device, pursuant to Part 15 of the FCC Rules. This equipment generates uses and can radiate radio frequency energy and if not installed and used in accordance with the instructions, may cause harmful interference to radio communications. However, there is no guarantee that interference will not occur in a particular installation. If this equipment does cause interference to radio or television reception, which can be determined by turning the equipment off and then on, the user is encouraged to try to correct the interference by one or more of the following measures:

- Reorient or relocate the receiving antenna.
- Increase the separation between the equipment and receiver.
- Connect the equipment to a different outlet so that the equipment and receiver are on different branch circuits.
- Consult the dealer or an experienced radio/TV technician for help.
- Any Changes or modifications not expressly approved by the party responsible for compliance could void the user's authority to operate the equipment.
- This equipment complies with FCC radiation exposure limits set forth for an uncontrolled environment. This equipment should be installed and operated with minimum distance 20cm between the radiator & your body.



# LEGAL & SAFETY

The Speakers are not intended for use by people (including children) with reduced physical, sensory or mental capacity. People who have not read the manual, unless they have received an explanation by someone responsible for their safety, should not use these. Children should be monitored to ensure that they do not play with the speakers or submerge them in water.

No objects filled with liquids should be placed on the speakers. Always leave a minimum distance of 4" (10 cm) around each speaker to ensure sufficient ventilation. Open flame sources, such as candles, should not be placed on top of the speaker.

Danger of explosion if battery is removed and incorrectly replaced or not replaced by the same type or equivalent by an authorized warranty facility. The battery should not be removed and externally exposed to excessive heat such as sunshine or fire.

The battery should only be replaced by SoundPRO® or its authorized warranty repair centers. Switch the device off where the use of the device is not allowed or where there is a risk of causing interference or danger.

All wireless devices are susceptible to interference which may affect performance. SoundPRO® devices conform to international/national standards. These standards and regulations were adopted after the completion of extensive testing and research. Only SoundPRO® or its authorized warranty repair centers are authorized to install or repair these Speakers. Only use the included accessories to charge the speakers.

## WARRANTY

A. SoundPRO® guarantees its products to be free from defects in materials and workmanship for one (1) year from the original purchase date.

B. This limited warranty does not cover damage or failure caused by abuse, misuse, abnormal use, faulty installation, improper maintenance, or any repairs other than those provided by an authorized SoundPRO® Service Center.

C. There are no obligations of liability on the part of SoundPRO® for consequential damages arising out of or in connection with the use or performance of the product or other indirect damages with respect to loss of property, revenues, of profit, or costs of removal, installation, or reinstallation. All implied warranties for Innovative Concepts & Designs, including implied warranties for fitness, are limited in duration to one (1) year from the original date of purchase, unless otherwise mandated by local statutes.

## SUPPORT

If you have problems with your device, please consult the instructions in this manual. Please also visit us on the web at [www.soundproav.com](http://www.soundproav.com) to get up-to-the-minute news, alerts, and documentation for your device. For additional assistance, please contact SoundPRO Technical Support.

**SoundPRO® Technical Support**  
**2320 East 49th St.**  
**Vernon, CA 90058**  
**(866) 411-6292**  
**support@soundproav.com**  
**<http://www.soundproav.com>**